

### DIY INSTALLATION GUIDE

Durawall's slim profile and simple design enables it to be easily installed by yourself

#### STEP 1

The area where the wall will go needs to be profiled.



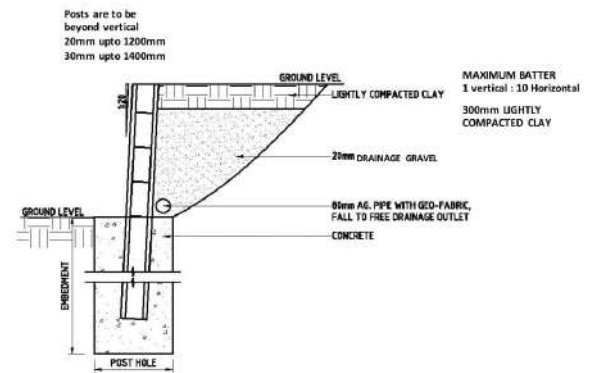
#### STEP 2

Using a string line, set out post holes to suit sleeper length. Holes are dug at 450mm diameter for all walls up to 1.6m. Hole depth is equal to wall height plus 200mm. Add 400mm if fence being attached.



### STEP 3

Starting at one end, place a post in the hole. Post should be plumb laterally and leaning as per diagram. Place second post and measure span to ensure correct distance to suit selected sleeper. Continue this process until all posts are standing.



(Fig.2)

### STEP 4

Pour concrete into each post hole and bring up to the base of the bottom of wall height. After curing load required sleepers.



### STEP 5

Place geo fabric behind wall to prevent silt build-up and install aggi pipe at base. Backfill drainage gravel to the required height.



### STEP 6

Fencing can be installed on fence brackets that are provided by DURAWALL. For walls under 1.0m ensure posts are at least 1.0m in the ground.



NOTE [1] Walls above 1.0m require council approval [2] Technical data for walls available from Durawall

This guide is a basic outline of how to install a Durawall concrete sleeper retaining wall. Durawall accepts no responsibility in regards to the DIY installation of a wall, or for any issues that occur as a result of an incorrect DIY installation. For large walls, engineering advice should be sought to ensure structural integrity.

# DURAWALL

[durawall.com.au](http://durawall.com.au)  
[info@durawall.com.au](mailto:info@durawall.com.au)



07 3390 6407